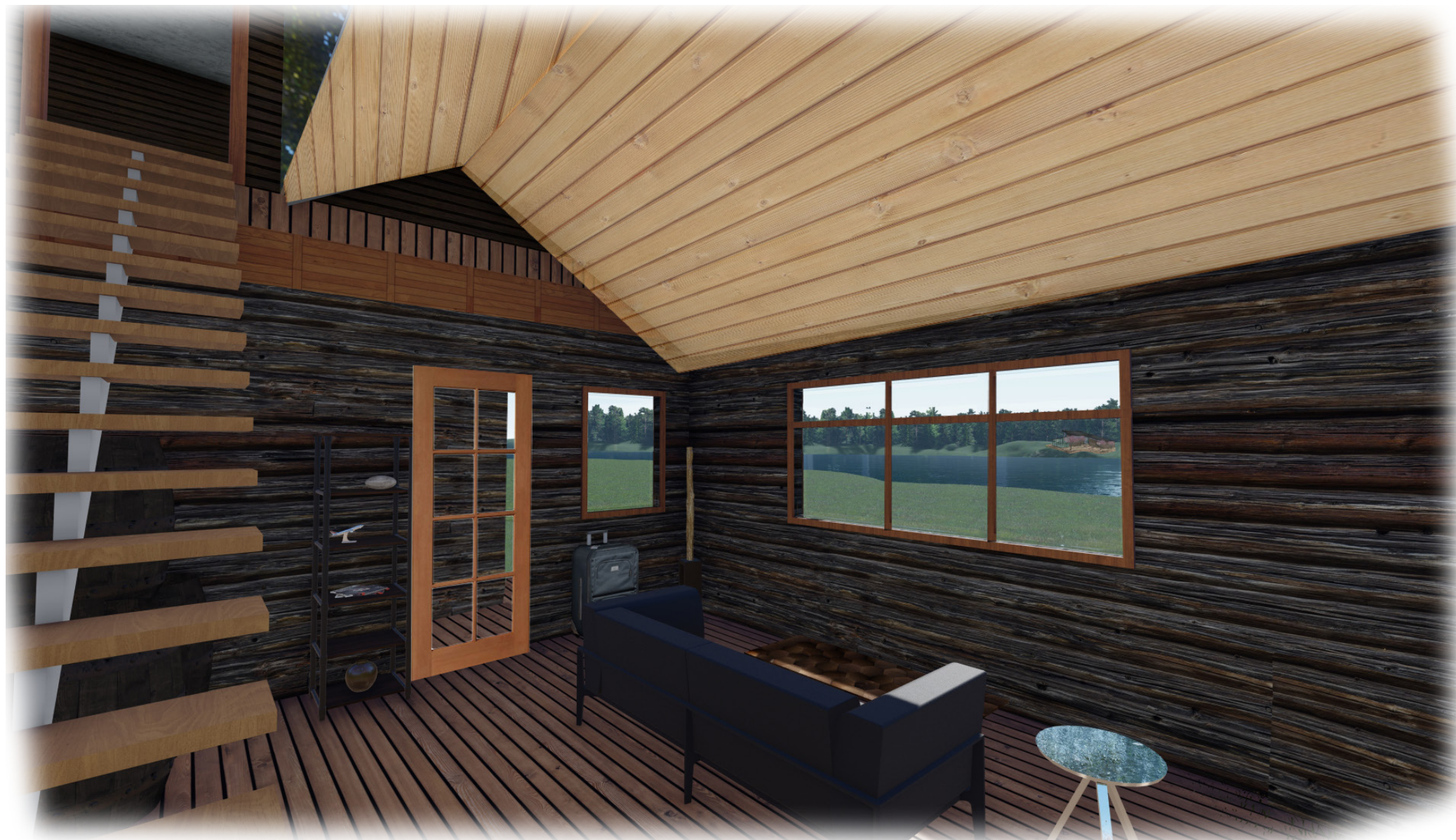
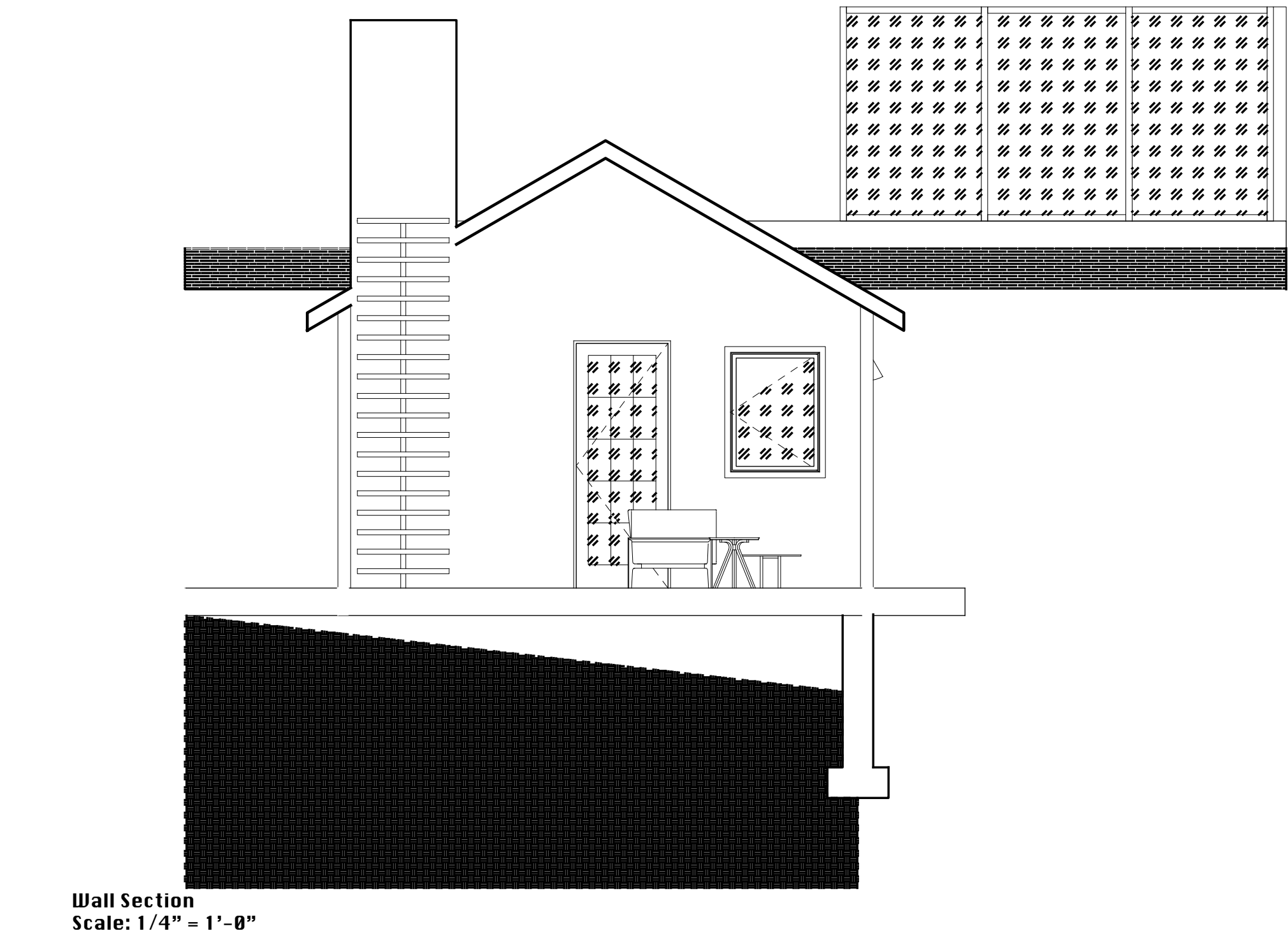
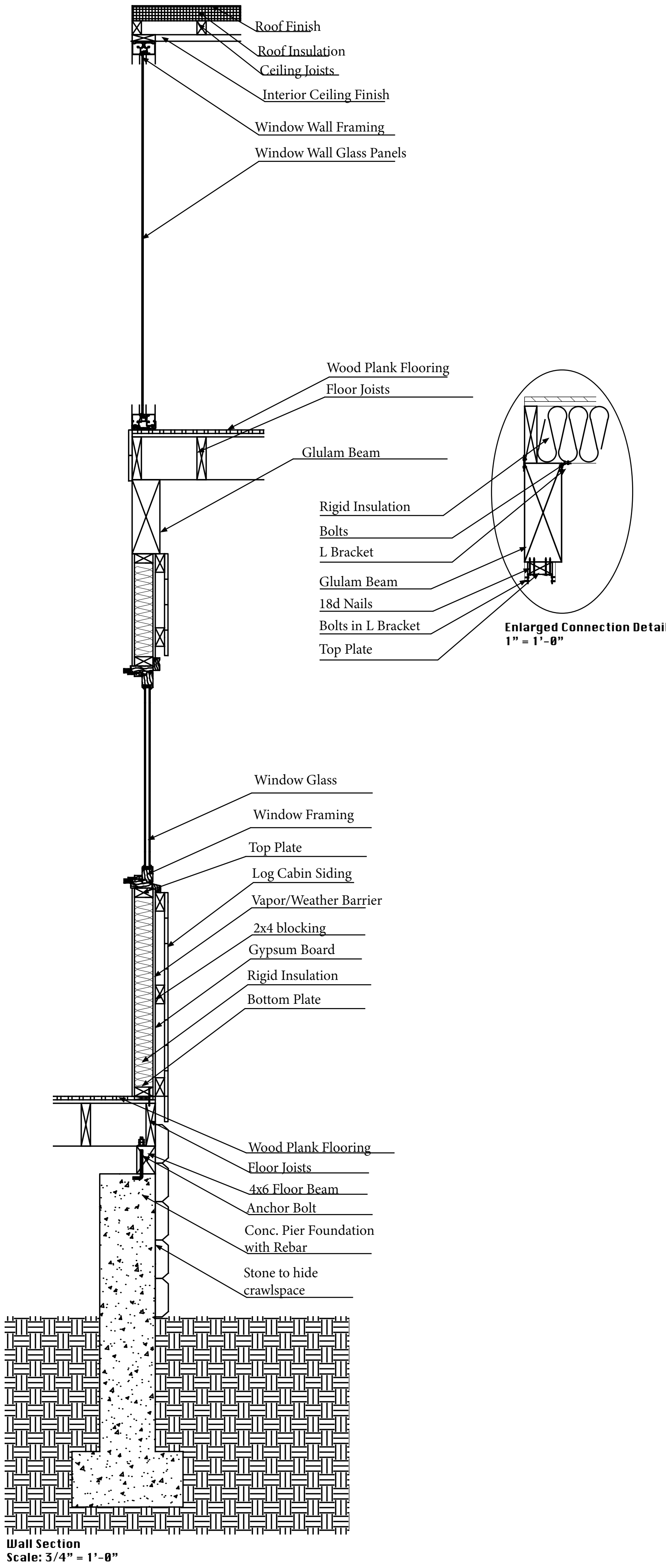


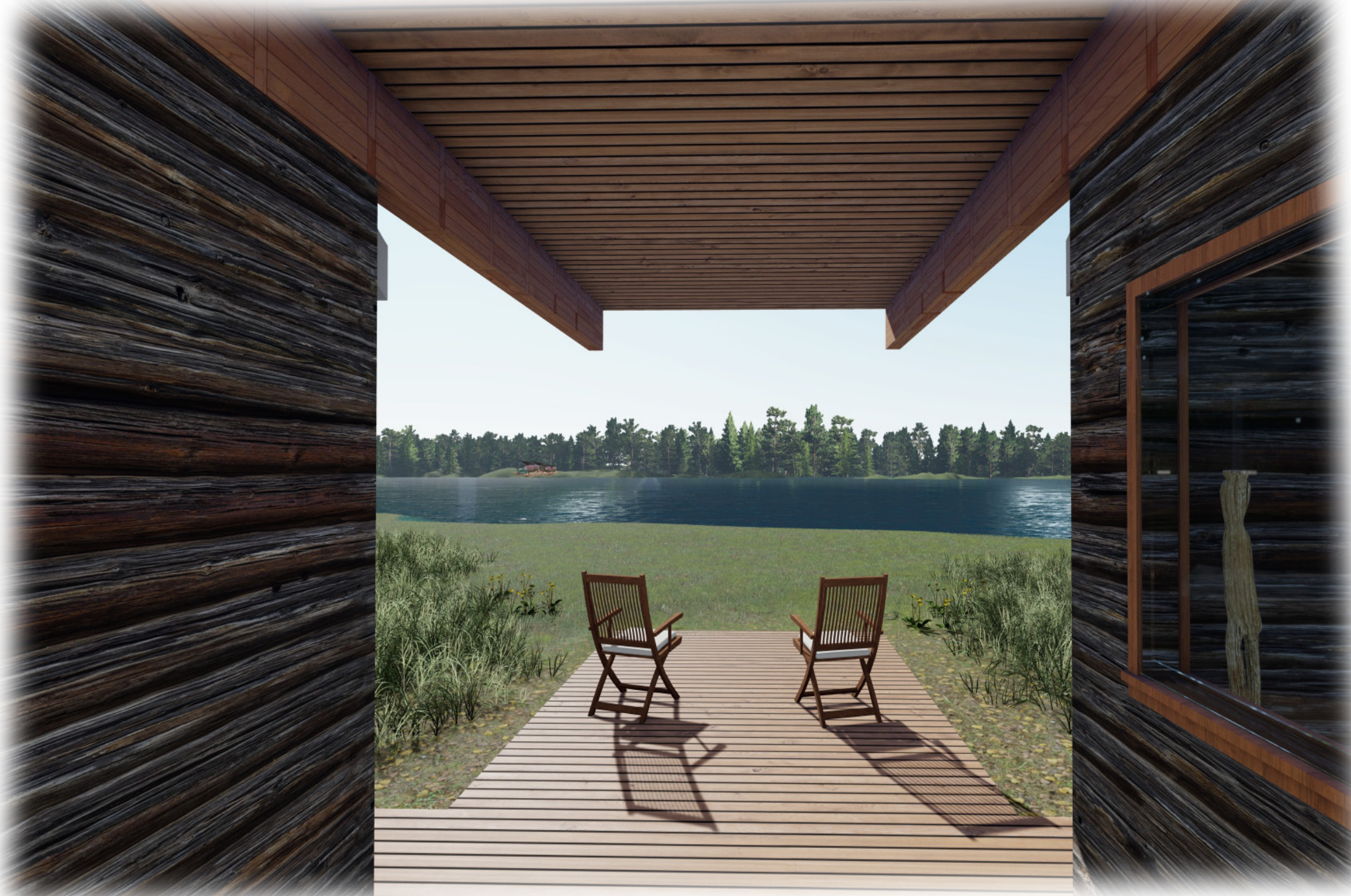
The Waterfront Property

The Waterfront Cabin is one of the four cabins for those staying an extended time at the Greenfield Farm Writers Residency. Located near the retention pond on site, the user has a personal interaction with the water feature, creating inspiration and giving the cabin it's own environment. The cabin design is a dog-trot style, modernized with uneven sides. Covering the breezeway is a cantilevered second floor, with a more modern design through materials and the design itself The cantilever allows the user to be closer to the water, immersing the user in the environment.

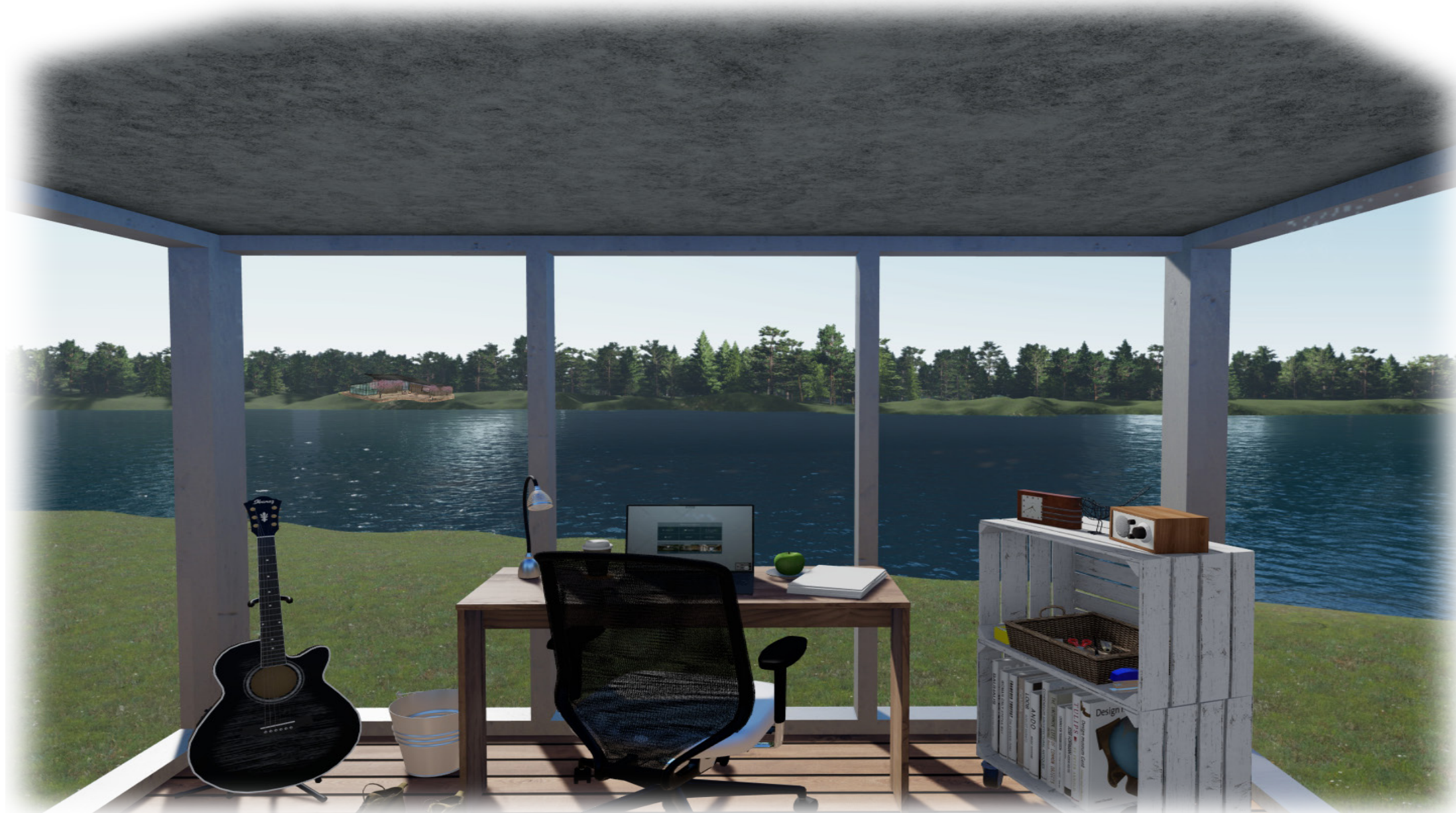
The significance of the design, layout and orientation is to embrace the past of Mississippi, symbolized by the dogtrot, and write a new story for the future of Mississippi, showcasing its natural beauty in a way that redefines the state's image, symbolized by the cantilever that interrupts the dogtrot's gable roof.



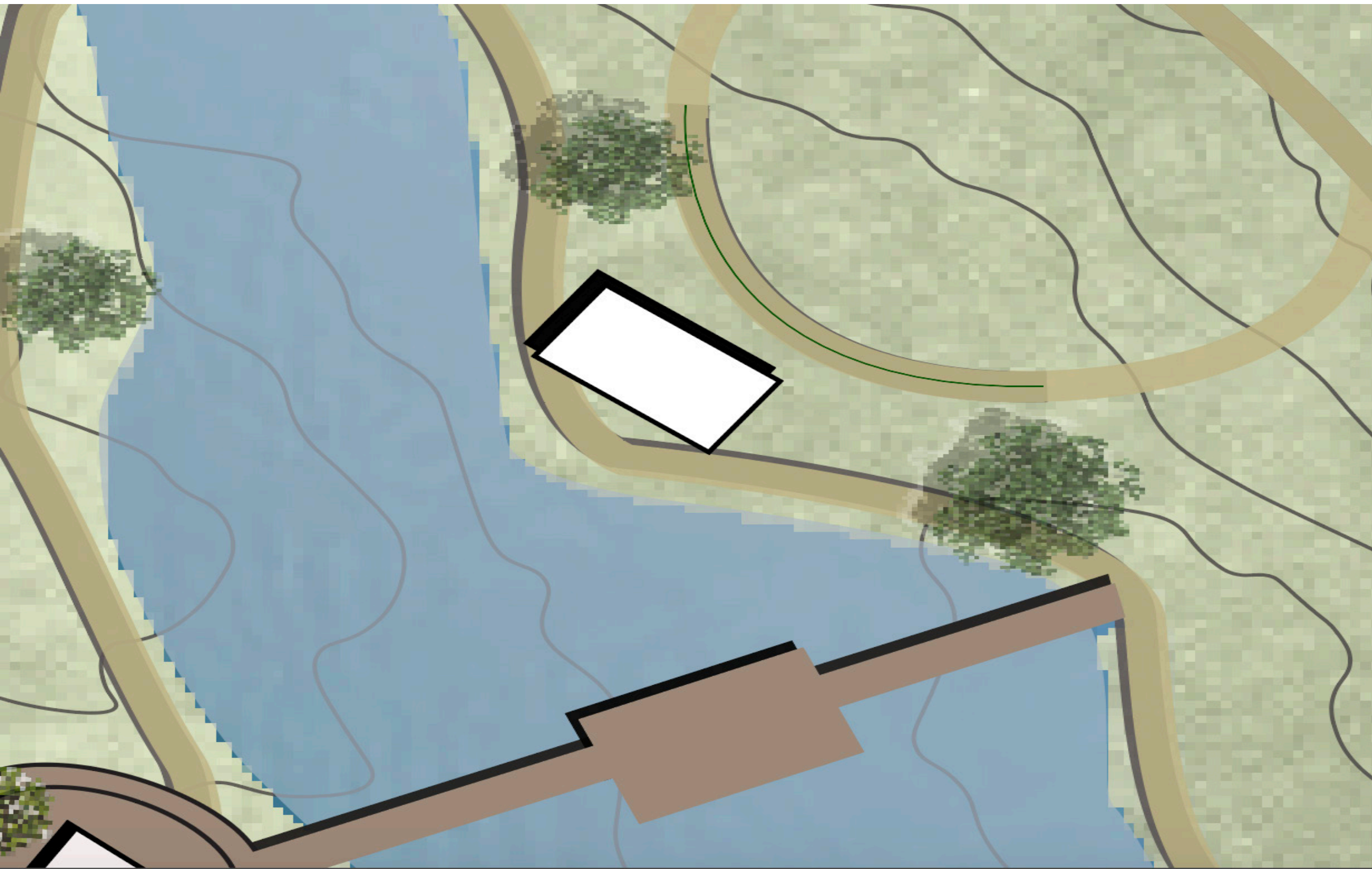
Relaxing Area Interior



View From Breezeway



2nd Floor Office View



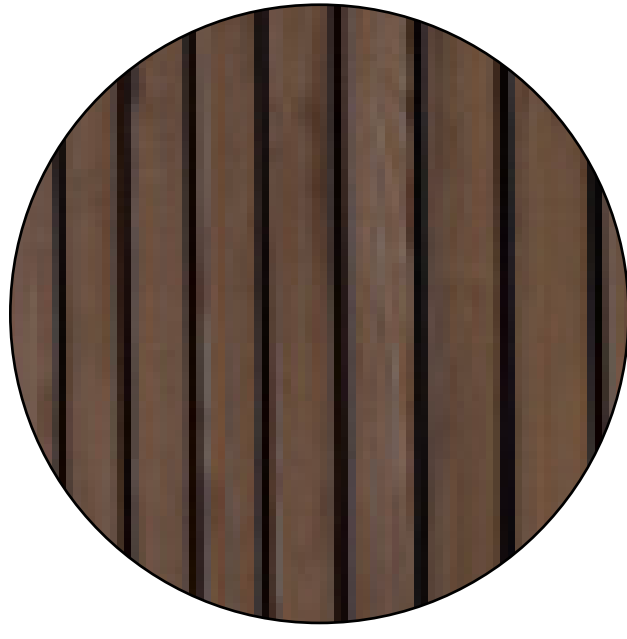
Site of Cabin



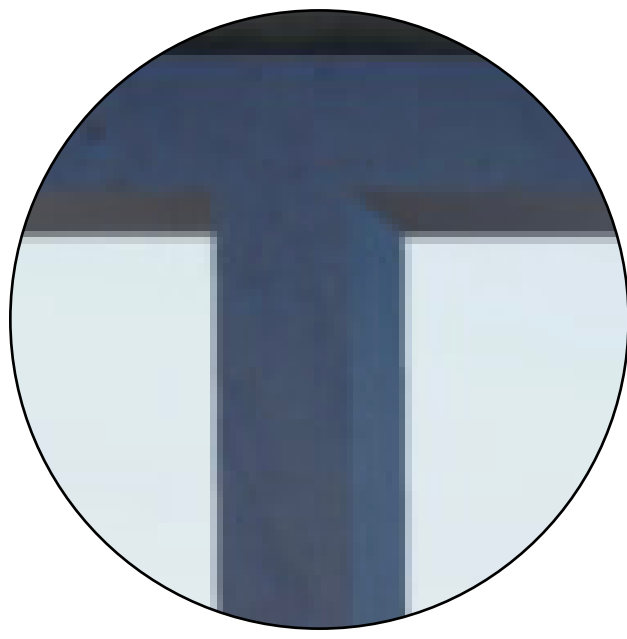
Glulam Beam



Log Cabin Siding



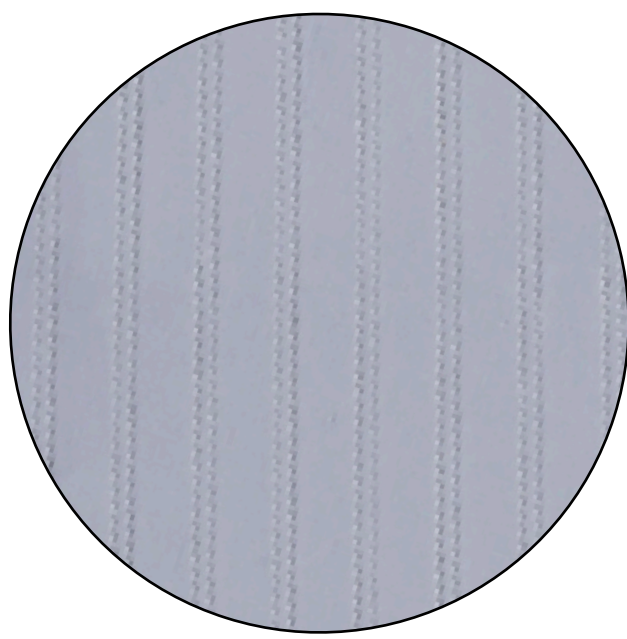
Oak Plank Flooring



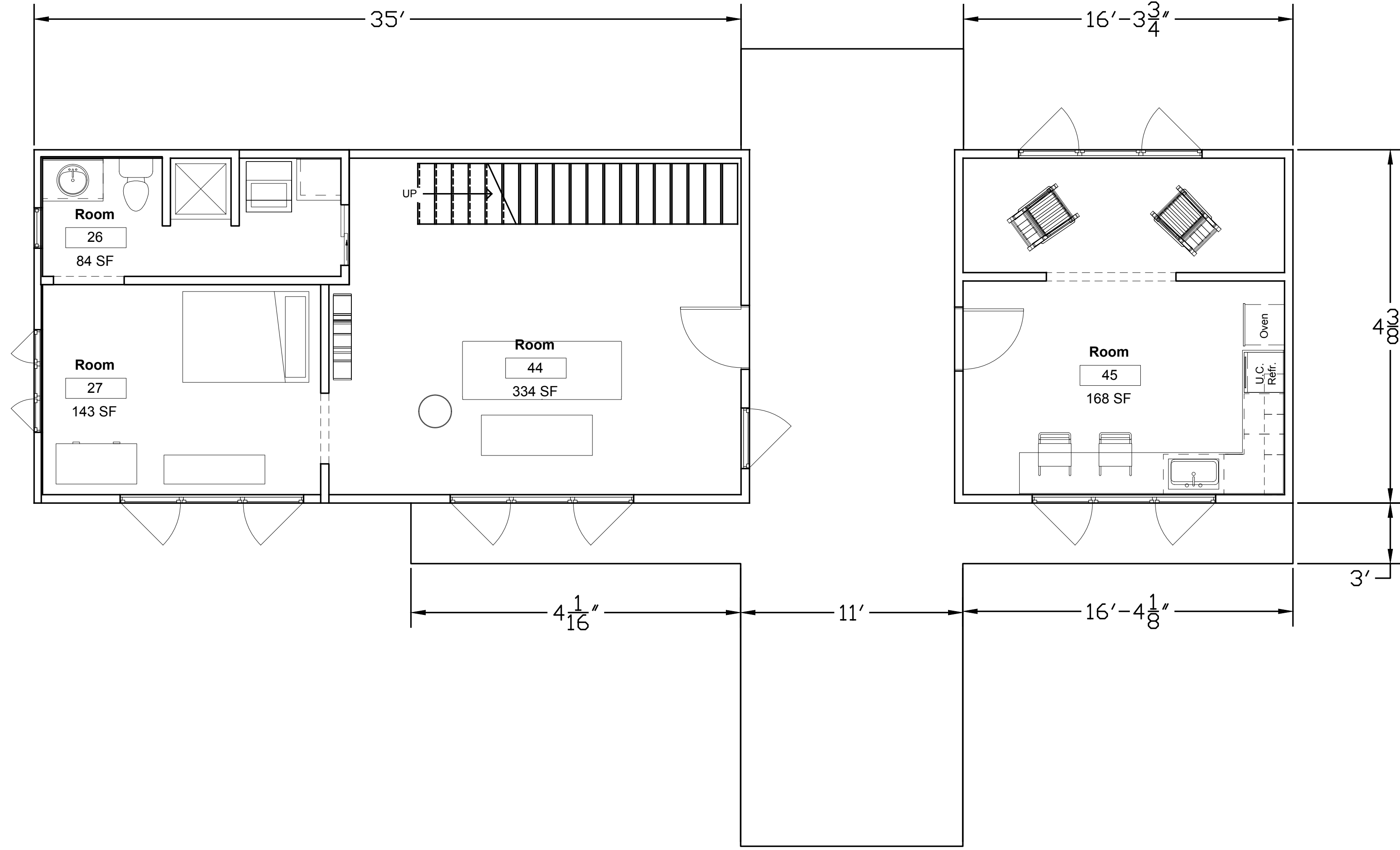
Window Framing



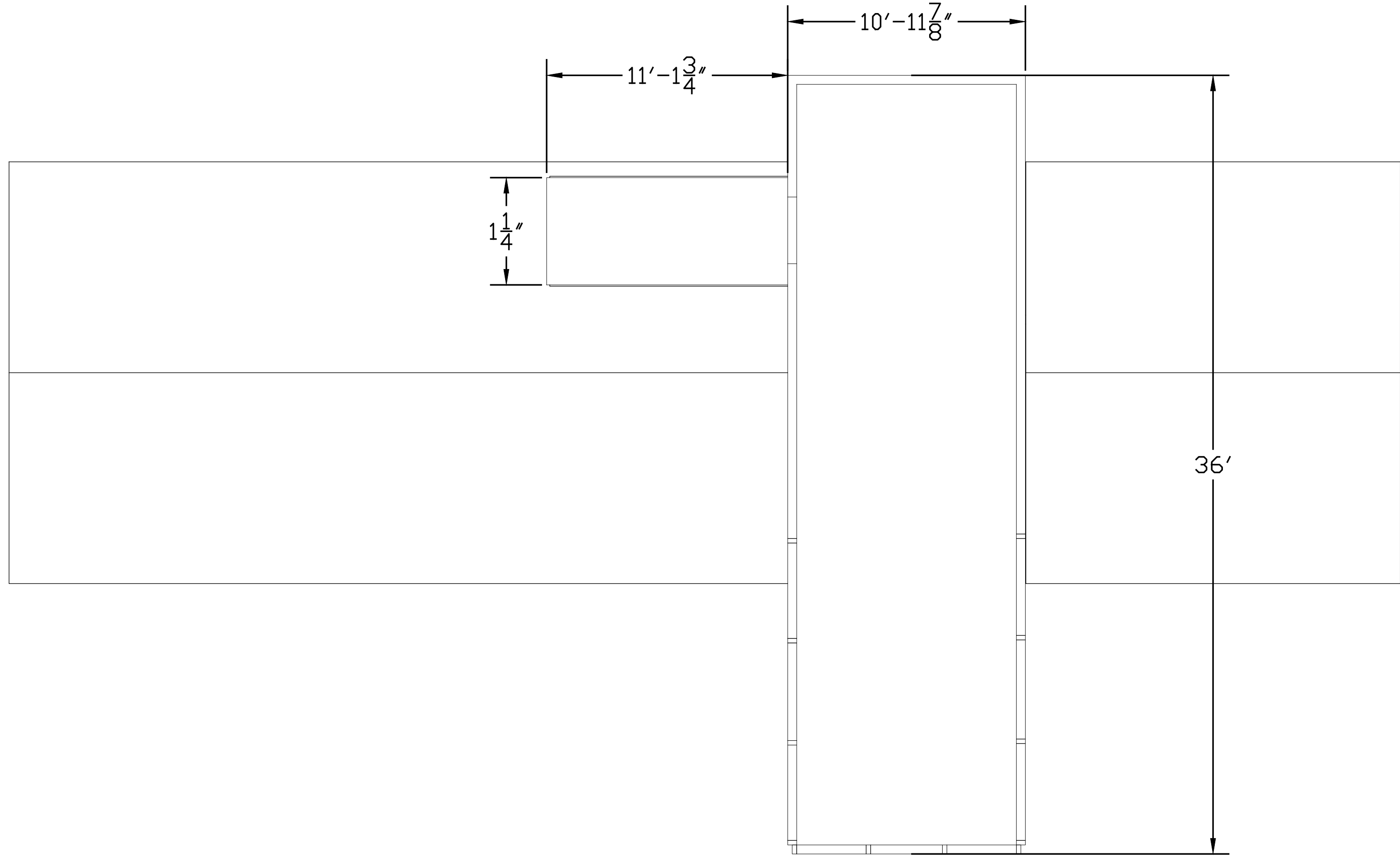
Oak Planking Siding



Tin Roofing



First Floor Plan
Scale: 1/4" = 1'-0"



Second Floor Plan
Scale: 1/4" = 1'-0"



Rhonometric View of Cabin